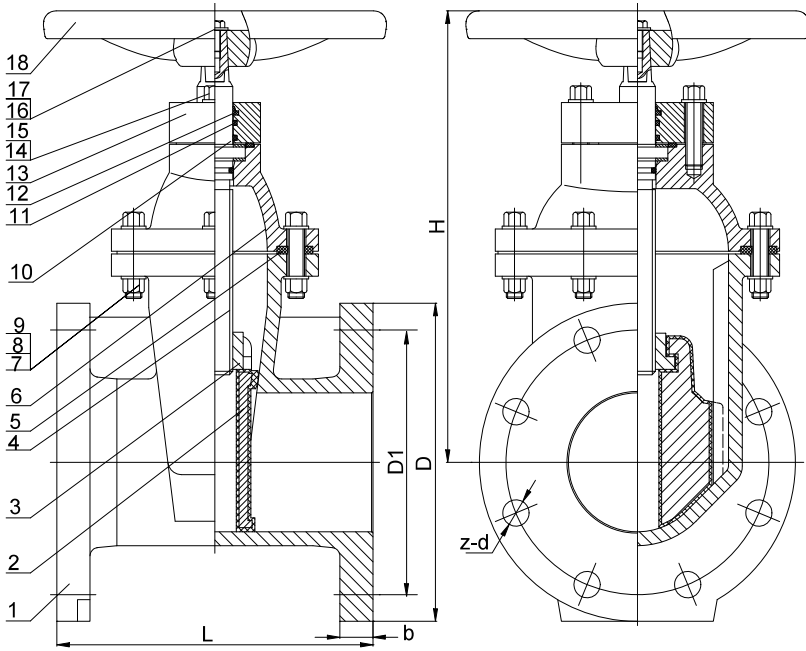


## AWWA C509 Resilient Seated Gate Valves Flangd end X Flange end



Operated by  
Spur gearbox

Bevel gearbox

Handwheel

Nut

Valve parts name and material

| No. | Part name | Material          | Grade               |
|-----|-----------|-------------------|---------------------|
| 1   | Body      | Ductile iron      | ASTM A536 65-45-12  |
| 2   | Wedge     | Ductile iron/EPDM | 65-45-12/ASTM D2000 |
| 3   | Stem nut  | Copper            | ASTM B16            |
| 4   | Stem      | Stainless steel   | SS304               |
| 5   | Gasket    | EPDM              | ASTM D2000          |
| 6   | Bonnet    | Ductile iron      | ASTM A536 65-45-12  |
| 7   | Bolts     | Stainless steel   | SS304               |
| 8   | Nuts      | Stainless steel   | SS304               |
| 9   | Washers   | Stainless steel   | SS304               |
| 10  | O ring    | EPDM              | ASTM D2000          |
| 11  | Oring     | EPDM              | ASTM D2000          |
| 12  | Dust ring | NBR               | ASTM D2000          |
| 13  | Gland     | Ductile iron      | ASTM A536 65-45-12  |
| 14  | Washers   | Stainless steel   | SS304               |
| 15  | Bolts     | Stainless steel   | SS304               |
| 16  | Bolts     | Stainless steel   | SS304               |
| 17  | Washers   | Stainless steel   | SS304               |
| 18  | Handwheel | Ductile iron      | ASTM A536 65-45-12  |

Design

| 1 | Design       | AWWA C509             |
|---|--------------|-----------------------|
| 2 | Class        | 250 PSI               |
| 3 | Face to face | ASME/ANSI B16.10      |
| 4 | Flange end   | ANSI/AWWA C110/A21.10 |
| 5 | Testing      | AWWA C509             |
| 6 | Coating      | AWWA C550, NSF-61     |

Dimension

Unit in inch

| Size   | L    | H    | ΦD    | ΦD1   | b    | z-Φd    | Weight (Lbs) |
|--------|------|------|-------|-------|------|---------|--------------|
| 2"     | 7    | 10.4 | 6     | 4.75  | 0.63 | 4-0.75  | 33           |
| 2 1/2" | 7.5  | 11.4 | 7     | 5.5   | 0.69 | 4-0.75  | 40           |
| 3"     | 8    | 12.5 | 7.5   | 6     | 0.75 | 4-0.75  | 46           |
| 4"     | 9    | 13.9 | 9     | 7.5   | 0.94 | 8-0.75  | 66           |
| 5"     | 10   | 16.1 | 10    | 8.5   | 0.94 | 8-0.88  | 93           |
| 6"     | 10.5 | 17.5 | 11    | 9.5   | 1    | 8-0.88  | 106          |
| 8"     | 11.5 | 21.1 | 13.5  | 11.75 | 1.13 | 8-0.88  | 185          |
| 10"    | 13   | 24.3 | 16    | 14.25 | 1.19 | 12-1    | 260          |
| 12"    | 14   | 27.4 | 19    | 17    | 1.25 | 12-1    | 364          |
| 14"    | 15   | 30.7 | 21    | 18.75 | 1.38 | 12-1.13 | 507          |
| 16"    | 16   | 33.7 | 23.5  | 21.25 | 1.44 | 16-1.13 | 705          |
| 18"    | 17   | 36.7 | 25    | 22.75 | 1.56 | 16-1.25 | 970          |
| 20"    | 18   | 39.8 | 27.5  | 25    | 1.69 | 20-1.25 | 1124         |
| 24"    | 20   | 45.9 | 32    | 29.5  | 1.89 | 20-1.38 | 1585         |
| 30"    | 24   | 66.5 | 38.75 | 36    | 2.13 | 28-1.38 | 2973         |
| 36"    | 28   | 74.0 | 46    | 42.75 | 2.38 | 32-1.63 | 4405         |
| 42"    | 36   | 80.7 | 53    | 49.5  | 2.63 | 36-1.63 | 7930         |
| 48"    | 44   | 92   | 59.5  | 56    | 2.75 | 44-1.63 | 11450        |